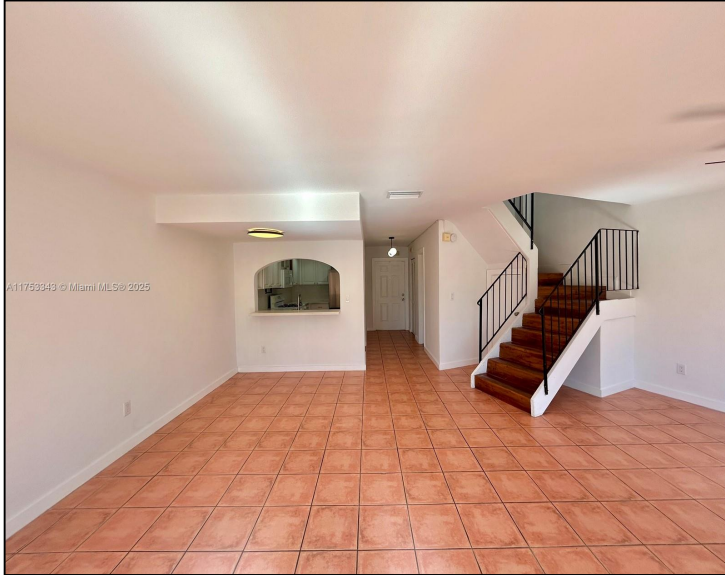


8650 SW 67th Ave #1043

\$3,000



## Remarks

Spacious two-story villa centrally located in Pinecrest. Renovated kitchen with newer appliances and a gas stove. Beautiful open concept living and dining rooms with lots of natural light. Convenience of a half bath, laundry room + storage downstairs. Balcony overlooking garden. Three bedrooms upstairs, wood floors throughout, renovated bathrooms, good closet space. The property comes with 2 assigned parking spaces next to each other. Gated and well maintained community with amenities including pool, gym, tennis court, BBQ area and clubroom. Close to Dadeland Mall. Gulliver Prep. Fairchild Tropical Gardens and UM. Easy access to metro station. US1 and highways. First month

## Features & Amenities

<b>County</b>		<b>Bedrooms</b>	3	<b>MLS#</b>	A11753343
<b>Address</b>	8650 SW 67th Ave #1043	<b>Bathrooms</b>	2	<b>Status</b>	A
<b>City</b>	Pinecrest FL	<b>Half Bathrooms</b>	1	<b>Tax Amount</b>	\$
<b>Zip</b>	33156	<b>Garage Spaces</b>	2	<b>Tax Year</b>	\$0
<b>Subdivision</b>	VILLAS OF PINECREST CONDO	<b>Water Front</b>	n/a	<b>Year Built</b>	1966
		<b>Pool</b>	n/a		
		<b>Pets Allowed</b>	n/a		
<b>Unit #</b>	1043	<b>Total Area SqFt</b>			
<b>Complex</b>	VILLAS OF PINECREST CONDO	<b>Maintenance Fee</b>	\$0		
		<b>Lot Dimensions</b>	1,290		

Information has not been verified, is not guaranteed