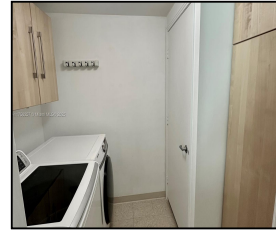


9066 SW 73rd Ct #1210

\$485,000



## Remarks

This luxurious resort-style condo is in very trendy Downtown Dadeland. Enjoy stunning skyline and breathtaking sunsets from this 2Bed, 2Bath, plus Den/Office, filled with natural light. 1 assigned parking plus 1 free valet for the second car. Largest unit in the building, European-style kitchen with granite countertops and stainless steel appliances, full-size W/D in the laundry/pantry closet. Basic internet, cable, and water are included. This full-service building is ideally located near Dadeland Mall, the University, and Hospitals. Enjoy quality time with friends over coffee, drinks, or a quick bite at nearby hotspots. With Publix, restaurants, shops, and the Metrorail station providing connection to Brickell and the

## Features & Amenities

<b>County</b>		<b>Bedrooms</b>	2	<b>MLS#</b>	A11758257
<b>Address</b>	9066 SW 73rd Ct	<b>Bathrooms</b>	2	<b>Status</b>	A
	#1210	<b>Half Bathrooms</b>	0	<b>Tax Amount</b>	\$6127
<b>City</b>	Pinecrest FL	<b>Garage Spaces</b>	2	<b>Tax Year</b>	\$2,024
<b>Zip</b>	33156	<b>Water Front</b>	n/a	<b>Year Built</b>	2006
<b>Subdivision</b>	METROPOLIS II AT DADELAND, METRO	<b>Pool</b>	n/a		
	POLIS II	<b>Pets Allowed</b>	n/a		
<b>Unit #</b>	1210	<b>Total Area SqFt</b>			
<b>Complex</b>	METROPOLIS II	<b>Maintenance Fee</b>	\$491		
		<b>Lot Dimensions</b>	1,467		

Information has not been verified, is not guaranteed