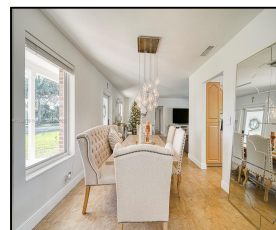
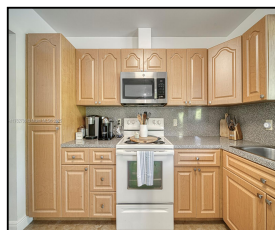


0 #

\$8,000



Remarks

Discover the perfect blend of comfort, style, and convenience in this beautifully upgraded 4-bed, 3-bath home nestled in the highly sought-after Continental Park neighborhood. Sitting on an oversized corner lot, this home boasts a lushly remodeled yard, a spacious terrace, and a paved pool deck surrounding a recently renovated sparkling pool—a true private oasis for relaxation or entertaining. Enjoy peace of mind with impact-resistant windows and doors, enhancing security and energy efficiency. Each room is thoughtfully designed with ample space for modern, comfortable living. Conveniently located near top-rated schools, shopping, dining, and major highways, this home offers the best of

Features & Amenities

County		Bedrooms	4	MLS#	A11762706
Address	0 #	Bathrooms	3	Status	PS
City	Miami FL	Half Bathrooms	0	Tax Amount	\$
Zip	33156	Garage Spaces	2	Tax Year	\$0
Subdivision	EHMANN	Water Front	n/a	Year Built	1961
	HOMESITES	Pool	n/a		
Unit #		Pets Allowed	n/a		
Complex	EHMANN	Total Area SqFt	15865		
	HOMESITES	Maintenance Fee	\$0		
		Lot Dimensions	2,176		

Information has not been verified, is not guaranteed