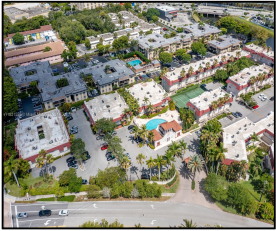


# 8650 SW 67 ave #1019

# \$2,675



## Remarks

Centrally located condo in the heart of Pinecrest -- 2 Bed / 2.5 Bath -- Community Pool -- washer and dryer in unit -- newly remodeled as of a year ago -- 2 story townhome -- 1 parking space -- plenty of guest parking - PINECREST ELEMENTARY SCHOOL DISTRICT

## Features & Amenities

<b>County</b>		<b>Bedrooms</b>	2	<b>MLS#</b>	A11821523
<b>Address</b>	8650 SW 67 ave	<b>Bathrooms</b>	2	<b>Status</b>	A
	#1019	<b>Haft Bathrooms</b>	1	<b>Tax Amount</b>	\$
<b>City</b>	Pinecrest FL	<b>Garage Spaces</b>	1	<b>Tax Year</b>	\$0
<b>Zip</b>	33156	<b>Water Front</b>	n/a	<b>Year Built</b>	1966
<b>Subdivision</b>		<b>Pool</b>	n/a		
<b>Unit #</b>	1019	<b>Pets Allowed</b>	n/a		
<b>Complex</b>		<b>Total Area SqFt</b>			
		<b>Maintenance Fee</b>	\$0		
		<b>Lot Dimensions</b>	0		

Information has not been verified, is not guaranteed